



GAT MONTHLY MEMBERSHIP PROGRESS REPORT

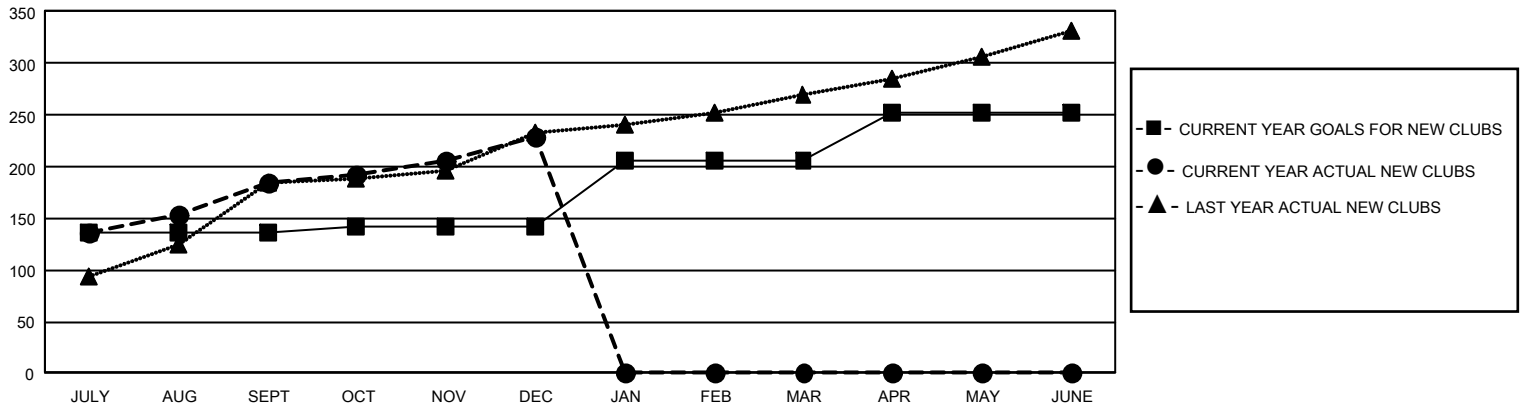
Results as of: 12/31/2025

GMT Constitutional Area 6 - S, Group C

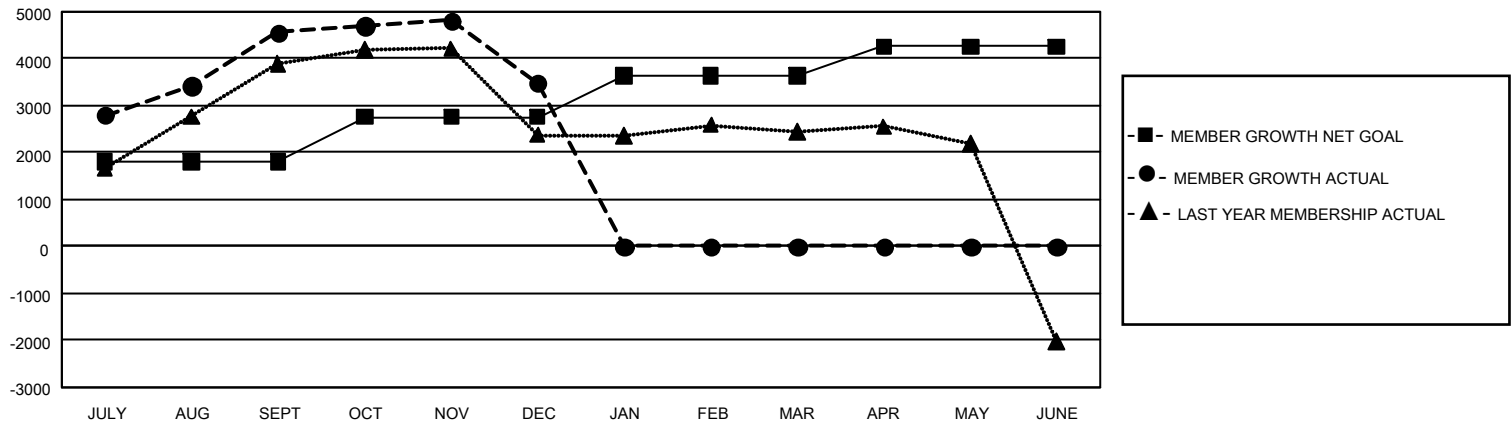
REPORT DOES NOT INCLUDE CLUBS IN UNDISTRICTED AREAS.

Clubs				Members			
RESULTS FOR 2025-2026				RESULTS FOR 2025-2026			
QUARTER	NEW CLUB GOAL	NEW CLUBS	DROPPED CLUBS	QUARTER	MEMBER GROWTH NET GOAL	MEMBER GROWTH ACTUAL	DROPPED MEMBERS ACTUAL (including transfers)
JULY/AUG/SEPT	408	185	30	JULY/AUG/SEPT	1804	6,664	1,791
OCT/NOV/DEC	15	43	4	OCT/NOV/DEC	957	2,070	2,969
JAN/FEB/MAR	195	0	0	JAN/FEB/MAR	879	0	0
APR/MAY/JUNE	141	0	0	APR/MAY/JUNE	615	0	0

GOALS AND ACTUAL NEW CLUBS CUMULATIVE



GOALS AND ACTUAL MEMBERS CUMULATIVE



DROPPED CLUBS: 34

1,122 CLUBS OF 2,313 ADDED
1 OR MORE NEW MEMBERS

GENDER DISTRIBUTION

MALE	30,773 (68.34%)
FEMALE	14,240 (31.63%)
NON BINARY	2 (0.00%)
PREFER NOT TO ANSWER	11 (0.02%)

DROPPED MEMBERS

DECEASED	16
CLUB CANCELLED	224
OTHER	4,485
TOTAL	4,725

[CLICK HERE FOR CUMULATIVE MEMBERSHIP DATA](#)

TOTAL FAMILY UNIT MEMBERS 31,334

FAMILY MEMBERS PAYING HALF DUES 21,951